

prio[®]



AVANTGARDE

SDX600, SDX_____

USER'S GUIDE

Before operating this appliance, please read the instructions carefully. You may want to save this guide for your future reference. Failure to follow the instructions or meet the operating requirements may lead to the product's failure, malfunction, property damage or personal injury.

Safety Warning

- Plug the appliance into an electrical outlet only after you finish the installation.
- Check if the voltage indicated on the appliance corresponds to the local mains voltage before you connect the appliance.
- Do not use the appliance if it is damaged in any way. Take it to an authorized service center for repair.
- Do not open the appliance. There are no serviceable parts inside.
- When unplugging the appliance from the mains, do not pull on the power cord. Avoid touching the plug with wet hands.
- Do not place any items on the appliance. Do not place it near the sources of heat, radiators, etc. Do not place it in a tightly closed space where it may overheat.
- Keep the appliance out of reach of pets or other animals.
- In case of leakage malfunction or water presence around the appli-

ance shut off the electrical power to the circuit first, then pull the plug out of the electrical outlet.

- Remove the plug from the electrical outlet and shut off the inlet valve during your vacations or other extended periods of time when the appliance is not in use.
- Unplug the appliance from the electrical outlet while servicing it, and changing the membrane or filters.
- Do not use the appliance if operating requirements such as water temperature/water pressure/electrical supply, etc. are not met. There may be other local regulations to comply with.
- Do not use the appliance with water that is microbiologically unsafe or of unknown quality without adequate disinfection before or after the system.
- The appliance was not designed to be used with power cord extenders, power filters, external transformers, outlet splitters, etc.
- Do not use the waste water produced by the appliance for drinking or cooking.
- Never store or operate the appliance in direct sunlight.
- This appliance is not intended for use by persons (including children) with reduced physical, sensory or mental capabilities, or lack of experience and knowledge, unless they have been

given supervision or instruction concerning use of the appliance by a person responsible for their safety.

- Children should be supervised to ensure that they do not play with the appliance.
- At the end of its life, the appliance should be disposed off in an appropriate manner.

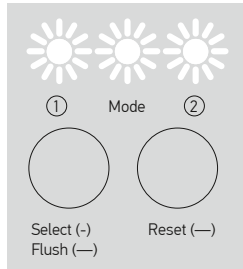
Disposal

Old appliances still contain many recyclable materials. Therefore, please take used unit to your retailer or recycling center so that it can be recycled.

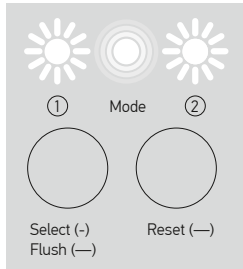
Warranty

1 year limited warranty. Please see the warranty sheet for details.

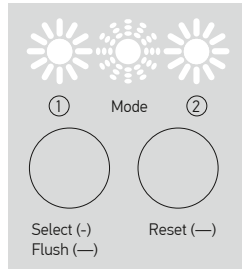
Description



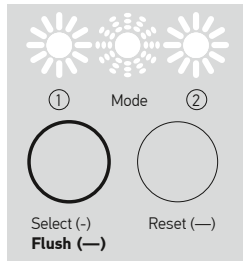
Ready



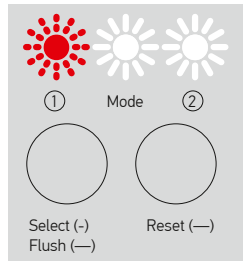
Filtration



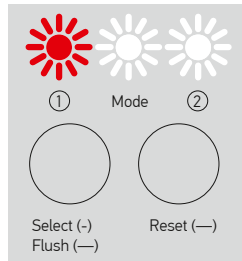
Auto-flush - 15 s every 4 gal (15 l) of permeate



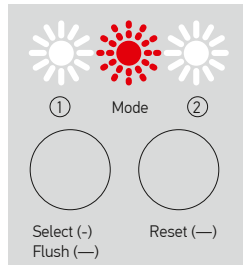
Hold Flush for 30 s for manual flush



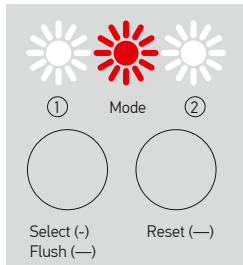
Filter 1 life is less than 10%



Filter 1 life is out



Idling protection - over 60 min continuous work



Leak protection

Specification

- Supply water pressure: 7.25-48 psi (0.05-0.4 MPa)
- Maximum supply water pressure: 192 psi (1.6 MPa) short-term
- Supply water temperature: 41-95 °F (5-35 °C)
- Ambient air temperature: 41-105 °F (5-40.5 °C)
- Water source: tap water supply, chlorinated or non-chlorinated, bacteriologically safe
- Maximum supply water TDS: 1000 ppm
- Filtered water production rating: 600 gpd (2270 lpd) without bypass
- Filtered water delivery rate, typical: 0.40-0.53 gpm (1.5-2.0 l/min)
- Membrane rejection rate¹, typical: 95%
- Recovery rate (system efficiency²), typical: 65%
- Drain water flow restrictor: 800 cc (ml/min) nominal, up to 900 cc in working mode, open flow in flush mode.
- Auto-flush duration: 15±5% s, manual flush duration: 30±5% s
- Idling protection: 60 minutes
- Indoor use only
- Electrical input: AC 100-240V 50/60 Hz

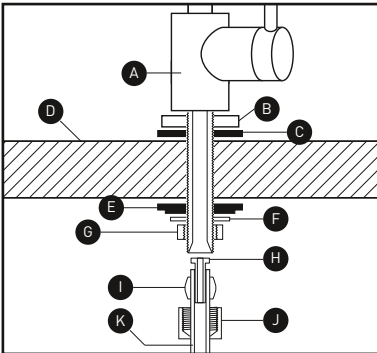
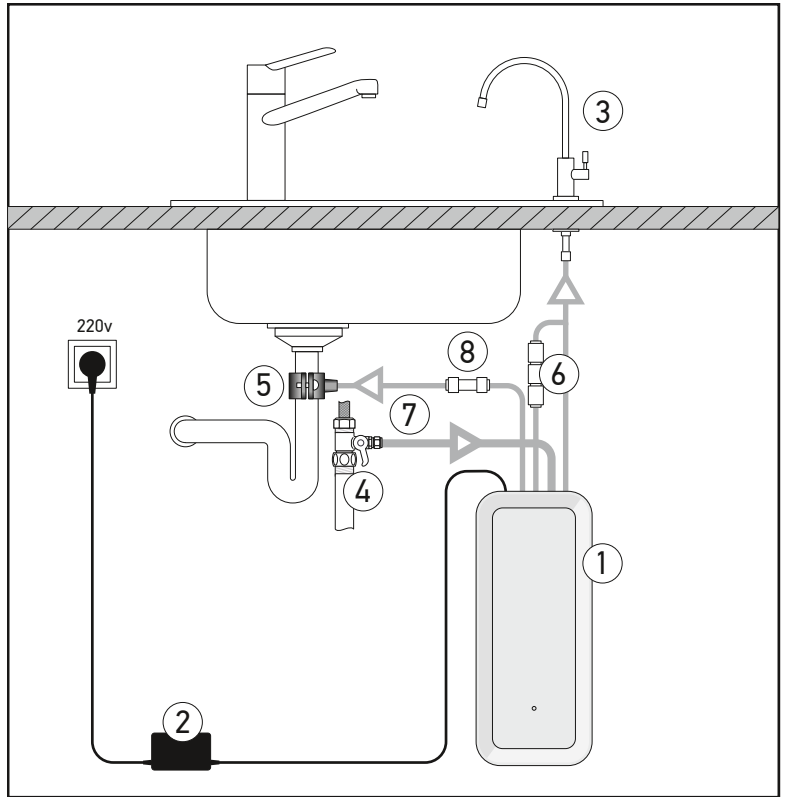
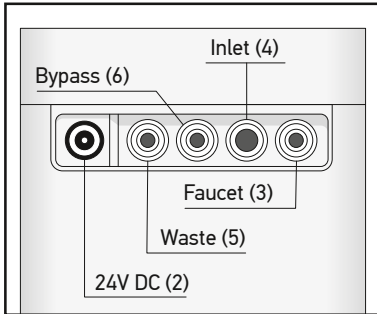
¹ For all dissolved solids combined as measured by TDS or conductivity meter.

² Efficiency rating means the percentage of the influent water to the system that is available to the user as reverse osmosis treated water under operating conditions that approximate typical daily usage.

Package contents

1. Filtration unit
2. Power adapter
3. Faucet
4. Adapter ball valve
5. Drain saddle
6. Bypass connection kit
7. Tubing: 3/8" – 10 ft / 3 m,
1/4" – 16 ft / 5 m
8. Union check valve
9. Wrench
10. User's guide

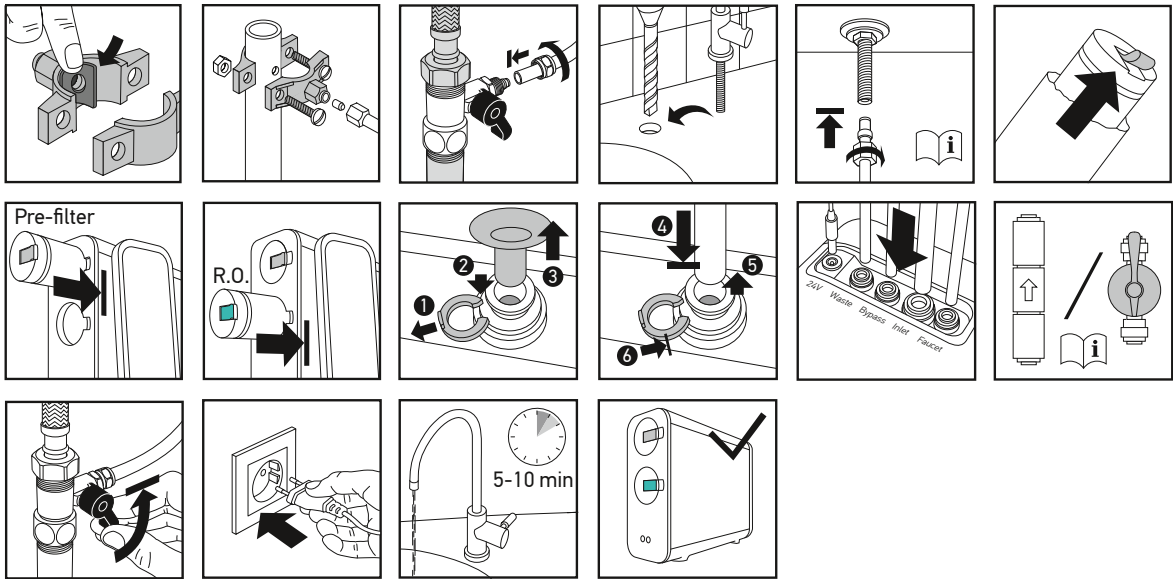
Connections



Faucet mounting chart

- A. faucet
- B. top washer
- C. sealing
- D. counter
- E. spacer
- F. washer
- G. nut
- H. tube insert
- I. collar
- J. nut
- K. tubing

Installation

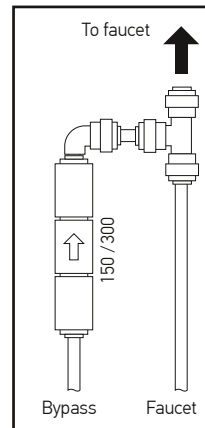


Bypass

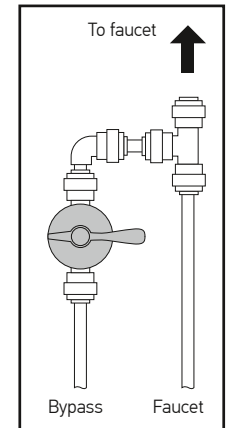
This reverse osmosis water filtration system allows you to finely tune filtered water TDS according to supply water quality and your personal preferences. Use supplied bypass connection kit, for installation refer to mentioned charts. To choose preferred option refer to the table. Take all data as a recommendation only, real numbers depends on multiple conditions as supply water contents, pressure and temperature, filter's and membrane's life, etc.

Supply water TDS, ppm	Filtered water TDS, ppm		
	Without bypass	Bypass 150 cc	Bypass 300 cc
200	10	27	42
300	15	41	63
400	20	55	83
500	25	68	104

With bypass:



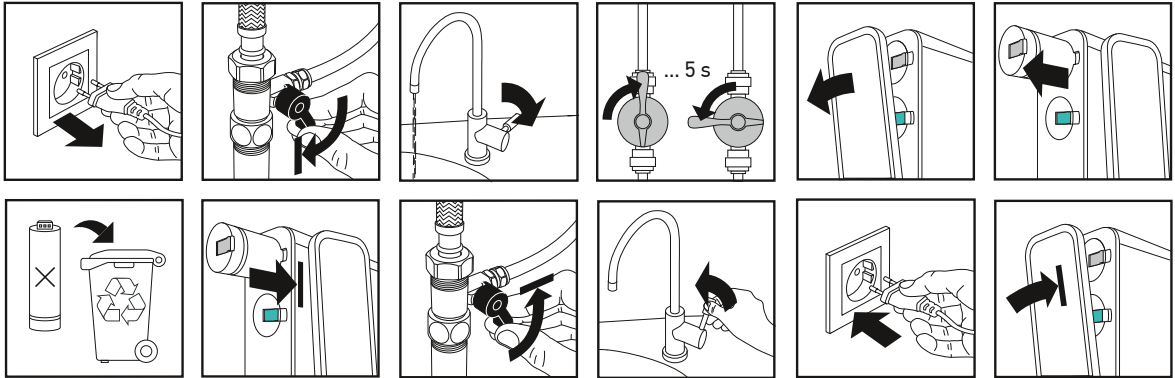
Without bypass:



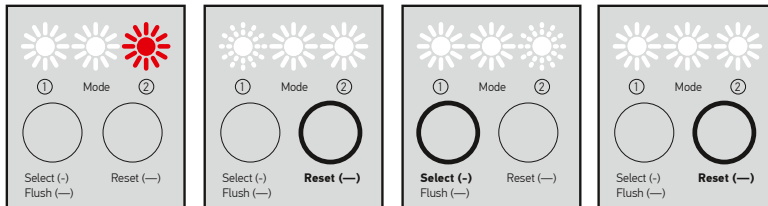
Filter and membrane changing

Stage	Type	Capacity	Model No.	Link
①	Pre-filter: sediment + carbon block	~4000 gal / 15000 l or 1 year	K820	
②	R.O. Membrane	~13200 gal / 50000 l of permeate or 4 years	K852	

To change filter or membrane



Filter's life counter reset



Filter 2 life is out

Hold Reset
to enter the
reset mode

Press Select to
choose the filter

Hold Reset
to update
the counter

Attention notes

- After initial installation or changing the filters or membrane, air contained in the new dry system or filter may go out sometimes producing foamy, white filtered water. Water may look white due to tiny air bubbles in it. If you leave the water to stand for few minutes all bubbles will surface and eliminate. Such aerated water is clean and safe. Gradually over the coming days all air inside your system will find its way out. To make this process faster you may repeat the initial washing procedure until you're pleased with the result. Also note that if for some reason the water supply contains a lot of dispersed air, your R.O. system may start producing aerated water again. The system's internal pipes and components never take air from outside as they are completely air and water sealed and leak-free.
- R.O. membrane needs up to 50 hours of active operation before reaching peak performance in terms of water flow, recovery and rejection rates.
- Failure to replace the disposable filters & membrane at recommended intervals may lead to reduced system performance and cracks in the filter housings, causing water leakage or flooding.
- Please note the capacity of the filters and membrane is limited. Their service life depends on the degree of contamination of the water supply and system usage. All terms apply to normal household use. Actual performance may vary. You may need to change filters or the membrane sooner than indicated if you notice chlorine or other tastes or smells, etc. Manufacturer recommends a TDS test every six months.
- To prevent leakage or cracks and ensure the safety of operation and top performance do not disassemble the filters or try to regenerate them.

Tips

- You may install the optional union tee fitting to the tubing line prior to the filtered water faucet to get another line of clean water going to the other point-of-use (such as a sink in a bathroom or ice maker in your fridge).
- Operating the system using softened feed water greatly reduces the chances of membrane failure and prolongs filters and membrane service life.
- If you want to use a storage tank for some reasons, you can connect it to the filtered water line between "faucet" outlet of filtration unit and the faucet with optional tee fitting. Appliance will work great with a tank and you don't need to change anything in the system. Drain full tank after first refill. Shut off the tank valve during the initial washing procedure.

